



Timber Ridge Homes



Lot 4 Starting at 719,000 + gst

3 Bedrooms

2.5 Bathrooms

Main Floor 932 Sq Ft.

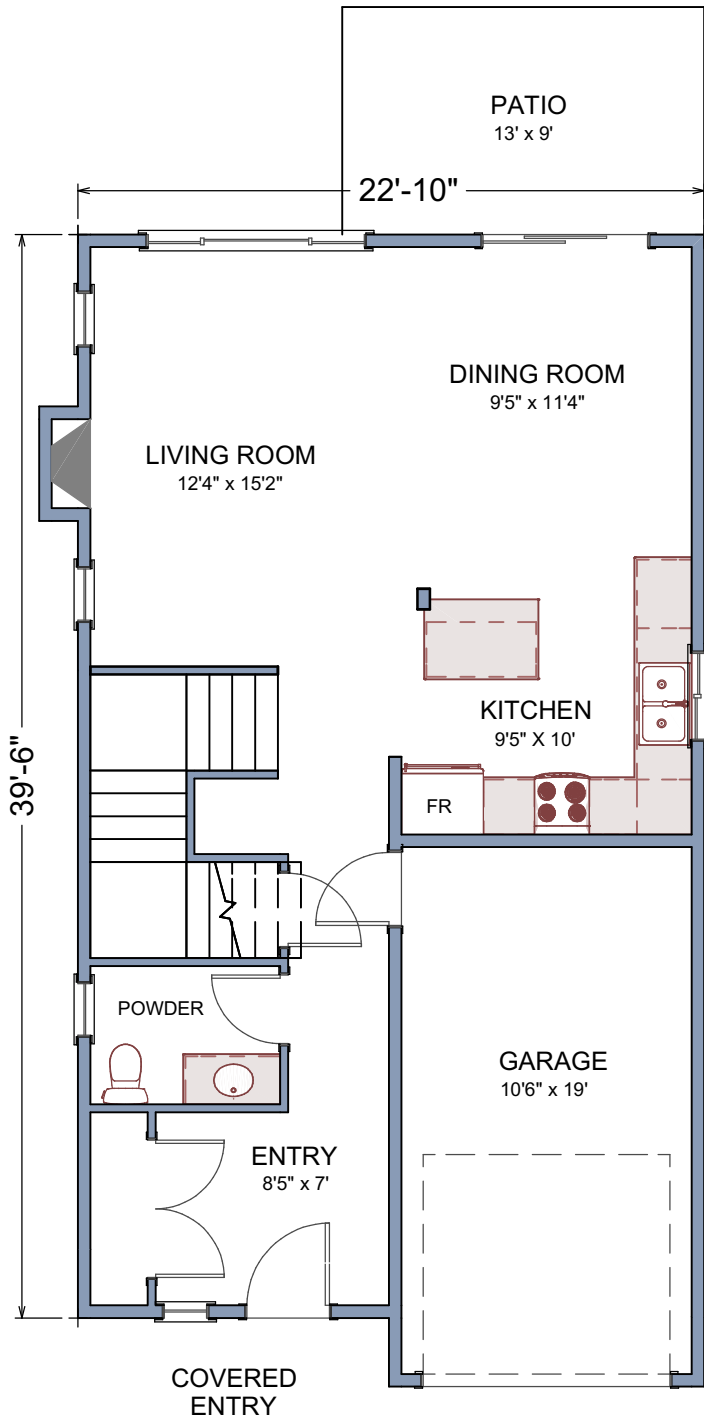
Upper Floor 831 Sq Ft.

Total Area 1,763 Sq Ft.

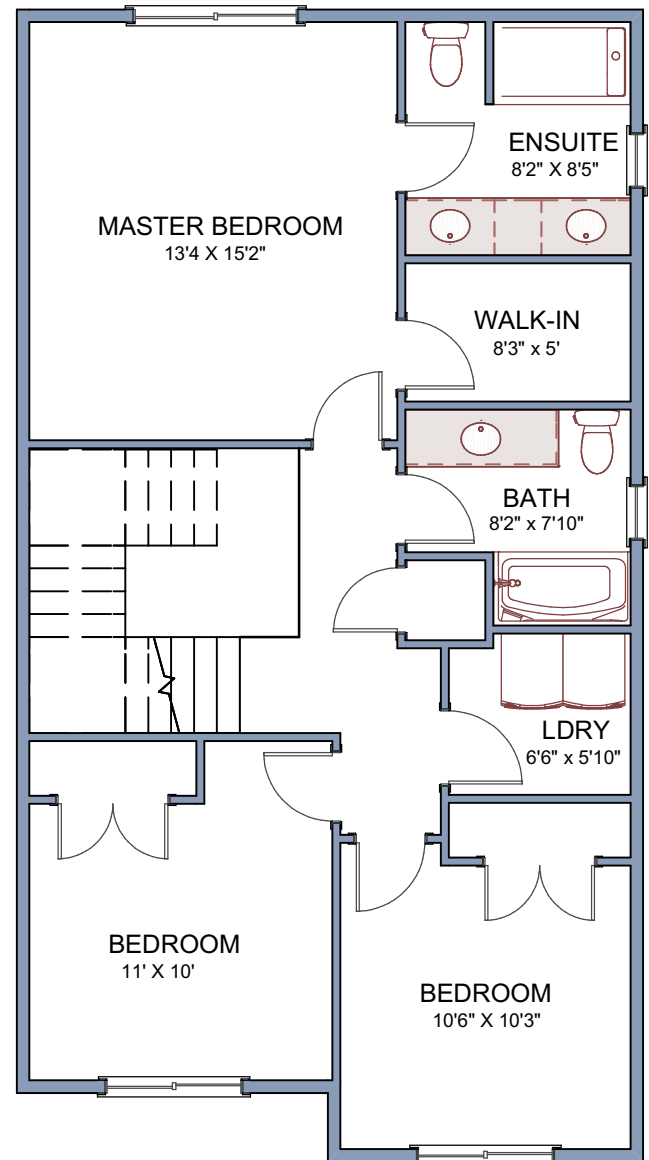
Lot Area 3,531 Sq Ft.



Timber Ridge Homes



**Main Floor 715 Sq Ft.
Garage 217 Sq Ft.**



Upper Floor 831 Sq Ft.

Total Area 1,763 Sq Ft.



Timber Ridge Homes

Building Elevations



North Elevation



West Elevation



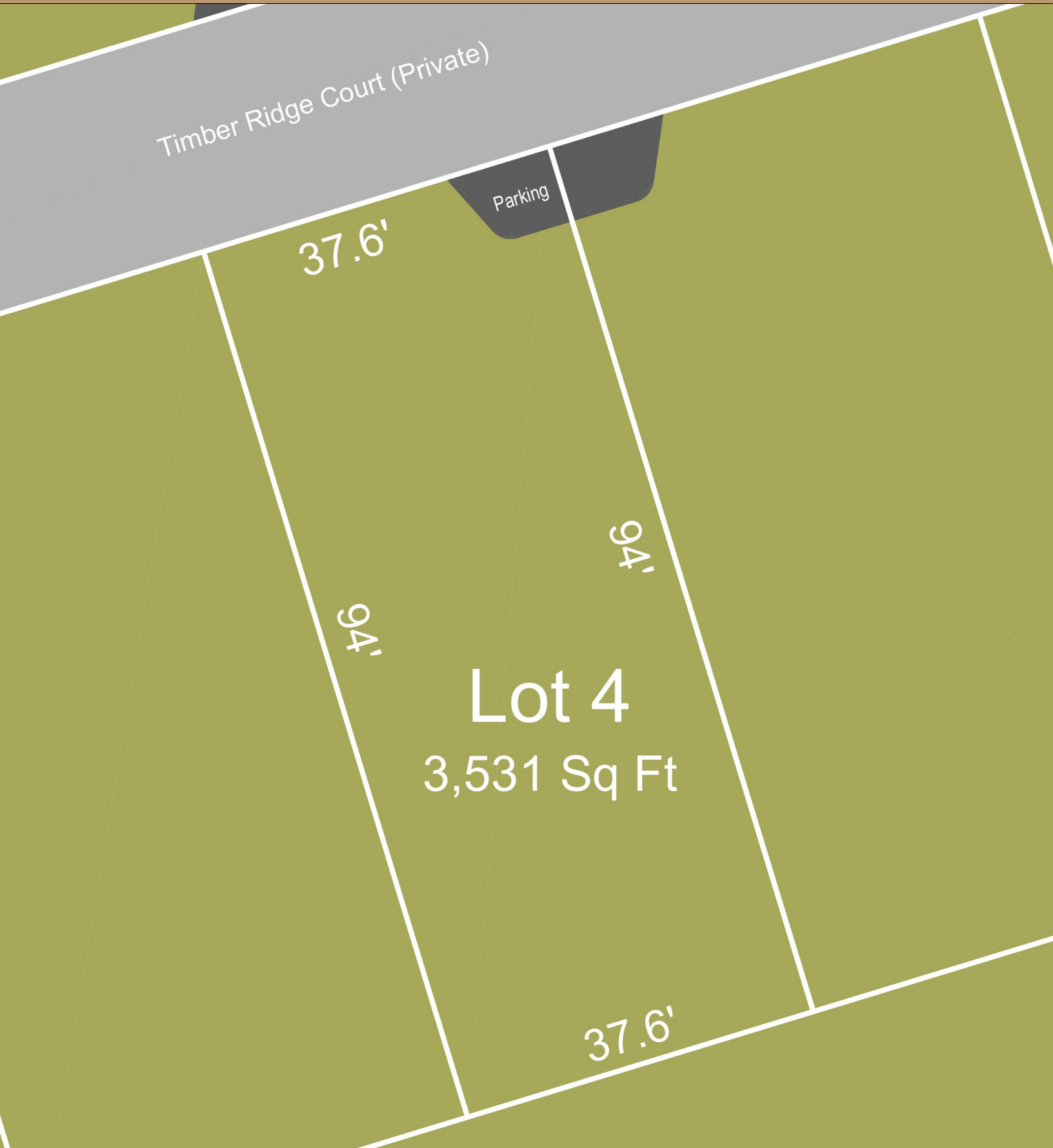
South Elevation



East Elevation



Timber Ridge Homes



Floor plans are not to scale and are for information only. The square footage, layout and dimensions are approximate and subject to change and should not be relied upon.

Email: info@timber-ridge.ca
Website: www.timber-ridge.ca



Timber Ridge Homes

Standard Features

- Engineered hardwood flooring on the main level
- 9' ceilings on the main level
- Quartz counters in the kitchen, ensuite and powder room
- Premium stainless steel KitchenAid appliance package
- On-demand natural gas hot water
- Ductless heat pump with air conditioning on the main level
- LED lighting throughout
- Gas fireplace with tile surround
- Shaker style cabinetry
- Walk in closet with built-in custom organizers
- Oversized walk in shower with frameless glass enclosure
- Outdoor gas BBQ box
- Central vacuum rough-in
- Tile ensuite, main bath and laundry flooring
- Full height tile backsplash
- Soft-close cabinets
- Stainless steel double undermount sink
- Energy efficient washer and dryer
- Fridge water box (with ice maker)
- 20' wide stamped concrete driveway
- Stamped concrete patio
- 3' crawl space
- 50 Amp electric car plug
- Fencing along rear property line
- Professional landscaping with in ground irrigation
- Energy-efficient rated homes
- Oversized Energy Star windows with screens
- 2-5-10 Year Home Warranty